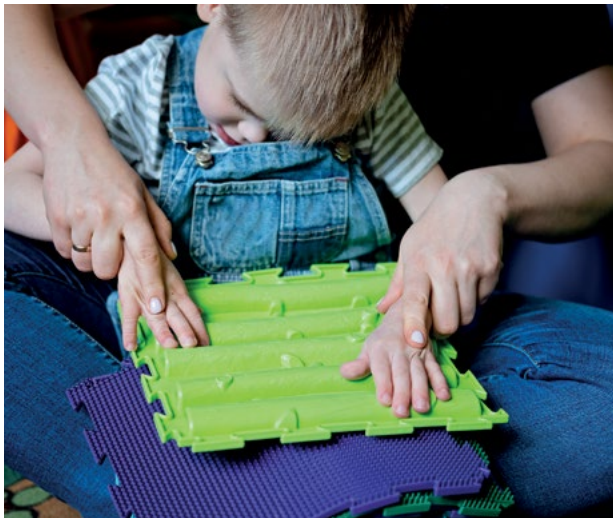


The SENCO's role is to ensure the SEN policy is being followed by all members of staff. They will advise staff within the school on best practice in supporting SEN. Parents and Carers can contact them for advice and to ensure any plans in place are being implemented. If your child is receiving additional support or has an EHCP, they will invite you to additional meetings to discuss progress.

The plans that are made to support your child should focus on strengths as well as areas for development, they should also promote independence. It is important that you attend any meetings you are invited to, in order that your views are incorporated into the plan.



Below is the link to the West Berkshire Directory where you can find more information about all the services available to support children and families with SEN

The West Berkshire Directory  
Tel: 01635 503100  
<https://directory.westberks.gov.uk/>



This document outlines the support that is available for SEN in schools:

Provision for Children & Young People with Special Educational Needs and Disabilities (SEND) in West Berkshire schools  
<https://bit.ly/3mQPC1U>

Local Offer FAQs:  
<https://bit.ly/43Cqe0J>

We are committed to being accessible to everyone. If you require this document in an alternative format or translation, please call SEN and Disabled Children's Service on Telephone 01635 503500.

**West Berkshire Council**  
**SEN and Disabled Children's Service**

Market Street, Newbury  
Berkshire RG14 5LD

T 01635 503500  
E [earlyyearsservice@westberks.gov.uk](mailto:earlyyearsservice@westberks.gov.uk)  
[www.westberks.gov.uk](http://www.westberks.gov.uk)

WBC/EDU/KB/0423

## Supporting Children with Special Educational Needs (SEN) and their families in West Berkshire Schools



## Where do I start?

It can be an overwhelming and confusing time when you first realise your child has special educational needs. You may also be worried that the school doesn't understand your child's needs.

The SEND (Special Educational Needs and Disabilities) code of Practice aims to support your child throughout their education so that they can have the best start.

All children learn and develop in a unique way and at different speeds to other children. Having special educational needs may mean that your child needs additional support in order to achieve the best educational and other outcomes, and can become confident and able to communicate their needs.

## How should schools support my child?

The SEND code of Practice requires schools to make arrangements to support children with SEN in their school. This should include early identification of children who need additional support, as this has been shown to increase their ability to access suitable education and opportunities, meaning that their long term educational outcomes are better if needs are identified at a young age.

Section 19 of the Children and Families Act 2014 requires the local authority to consider the views and needs of the child and their family, and that any decisions are fully understood by everyone involved to support children to succeed in their education.

Any support put in place to support your child is done so in a graduated way.

For example -

- Your child may be able to succeed perfectly well within their class, maybe with some minor adjustments made to ensure they can access the curriculum.
- If this isn't allowing for them to succeed, your child can access the support of the SEN provision within the school. The school may also involve advisory teams within the local authority to offer advice and maybe carry out further assessments. A plan will be written, outlining the support they are receiving. In West Berkshire, this plan is known as a 'Support and Review Plan (SAP)'
- If this isn't enough support for your child to allow them to succeed, an EHCP (Education and Health Care Plan) may be applied for in order to access a higher level of support. EHCP's are intended for those children who require a very high level of support and only a minority of all children with SEND have them.

## What is SEN?

Children who are attaining significantly below average for their age or have a disability affecting their ability to learn, are considered to have a Special Educational Need (SEN). They may require additional support to enable them to learn alongside their peers.

All schools must follow the SEND code of practice and may consult other services within the local authority.

Your child's school will -

- Have a SENCo (Special Educational Needs Co-ordinator) who is responsible for overseeing all children in the school with SEN.
- Be able to signpost or refer you to other services that may benefit your child.
- Have an SEN policy that will be available on the school website. There will also be an SEN Information report on the website that is updated annually.
- Have a named governor who is responsible for supporting SEN within the school.